



Plumas National Forest Operation Synopsis September 12-15, 2015

Project Name: *Science with Solutions: Documentation, remediation and monitoring of the ecological impacts of marijuana cultivation on endangered species within California's Public and Tribal Lands*

Reclamation Organizers: Dr. Mourad Gabriel and Dr. Greta Wengert (Integral Ecology Research Center, IERC); Special Agent Scott McIntrye (USFS-LEI), Lt. R. Paul Gaske (CDFW-LED)

Grant Principal Investigators: Dr. Mourad Gabriel, Dr. Greta Wengert (IERC); Dr. Deana Clifford (CDFW-WIL); Mark Higley (Hoopa Tribe)

Organizations Involved:

Governmental: United States Forest Service, California Department of Fish and Wildlife (Law Enforcement Division & Wildlife Investigations Laboratory), Plumas Sheriff's Office

Non-Governmental: Integral Ecology Research Center (IERC)

Support: Logistical and financial support was contributed by the above-mentioned entities. Funding for the scientific documentation and reclamation of trespass marijuana sites was provided through a Section 6 grant from the US Fish and Wildlife Service to the California Department of Fish and Wildlife and Integral Ecology Research Center

Number of trespass sites cleaned: 4

Location of sites: Plumas National Forest, Plumas County

Watershed impacted: East Branch of the north Fork and Middle Fork of the Feather River

Personnel per day: 16 (9 Law Enforcement; 7 Science Team)

Total water diversion volume from cisterns discovered: 28,710 gallons

Estimated daily water usage across four sites: 105,342 gallons per day

Estimated water usage per season (150 day season): 15.8 million gallons

Minimum amount of fertilizer used at sites: 3,845 pounds

Minimum amount of rodenticide used at sites: 33 pounds

Unknown pesticide, presumed Carbofuran: 4 bottles (total of ~10 ounces)

Garbage removed: 28 cubic yards (13,789 lbs or 6.9 tons)

Irrigation line removed: 21,000ft (3.98 miles)

Dead wildlife discovered: 3 black bears, 1 gray fox, several rodents and birds

IERC is collecting the following data at each site in conjunction with their USFWS/ CDFW-funded Section 6 grant: water quality, soil contamination, and wildlife use.



Cedar Creek Grow: Plumas National Forest

Figures (from left to right): One of several water cisterns detected at the Cedar Creek Grow; one of numerous piles of used fertilizer bags; an unknown pink colored toxicant found.



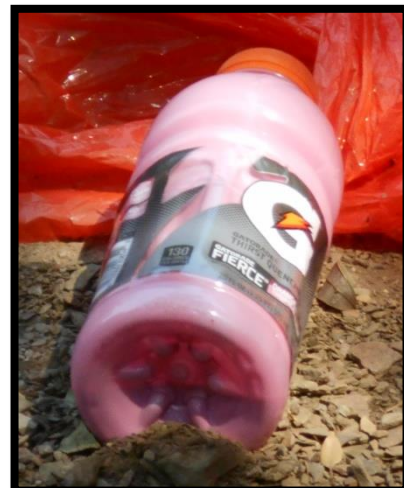
Bonta Creek Grow: Plumas National Forest

Figures (from left to right): One of several piles of empty rodenticide packages found; one of two dead bears discovered; an unknown pink colored toxicant found.



Clear Creek Grow: Plumas National Forest

Figures (from left to right): A large campsite with large amounts of trash and materials; an unknown pink colored toxicant found.



Long Valley Grow: Plumas National Forest

Figures (from left to right): A dead bear skull discovered near a poison bait pile; sampling poison bait pile; a dead gray fox near poison bait pile.



Reclamation: Plumas National Forest

Figures (from left to right): A trailer full with one site's infrastructure; helicopter transporting a net load of trash to the landing zone; amount of trash and infrastructure from one site.

